



Community Meeting

March 11, 2025

Agenda

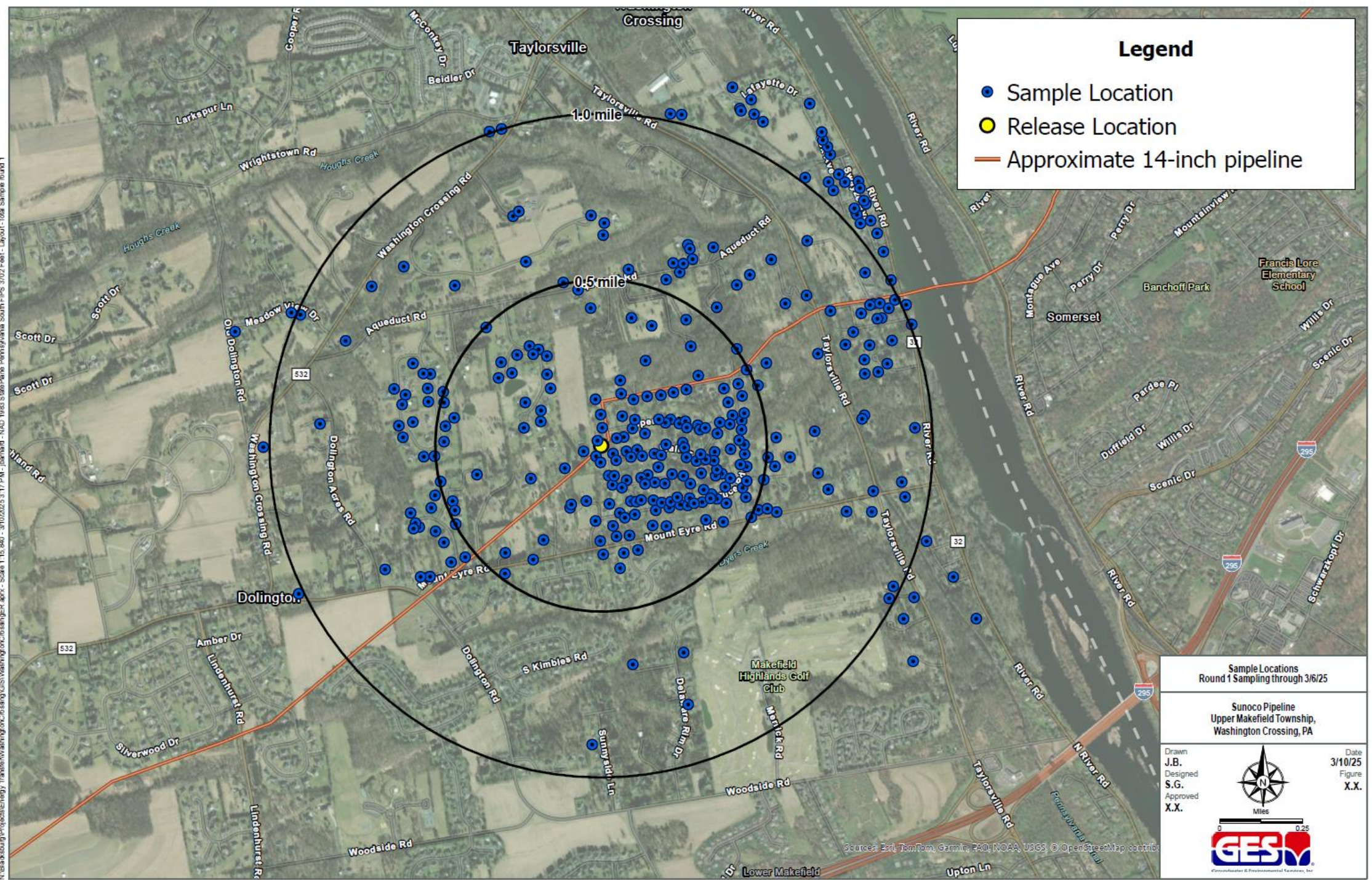
- Communications Updates
- Environmental Updates
- Operational Updates
- Residential & Community Support
- Next Steps

Communications Updates

Environmental Updates

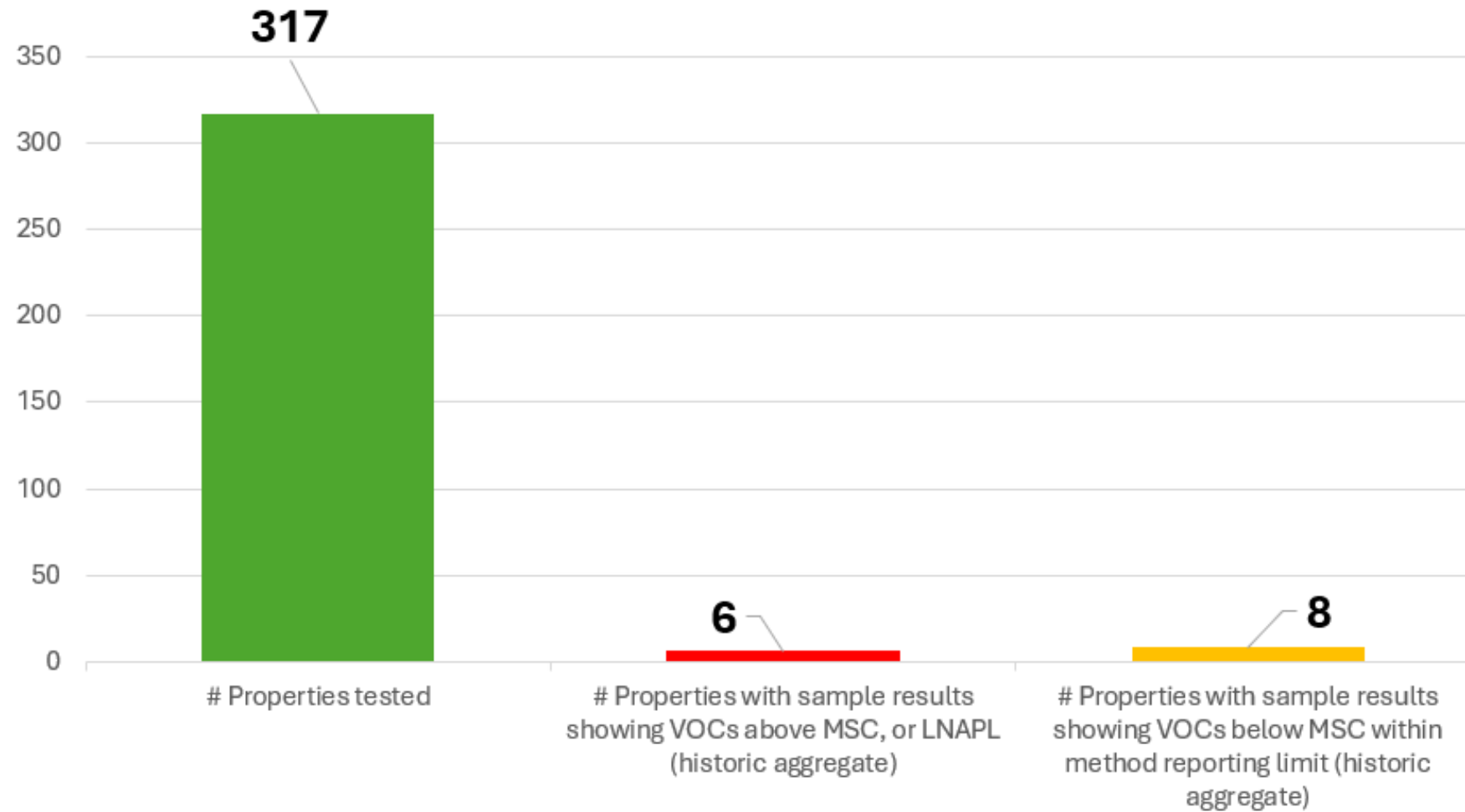
Environmental Updates

- Response to DEP Notice of Violation
- DEP Administrative Order
- Water Testing Updates
- POET System Updates
- Site Characterization Activity



Water Samples Performed & Results Received

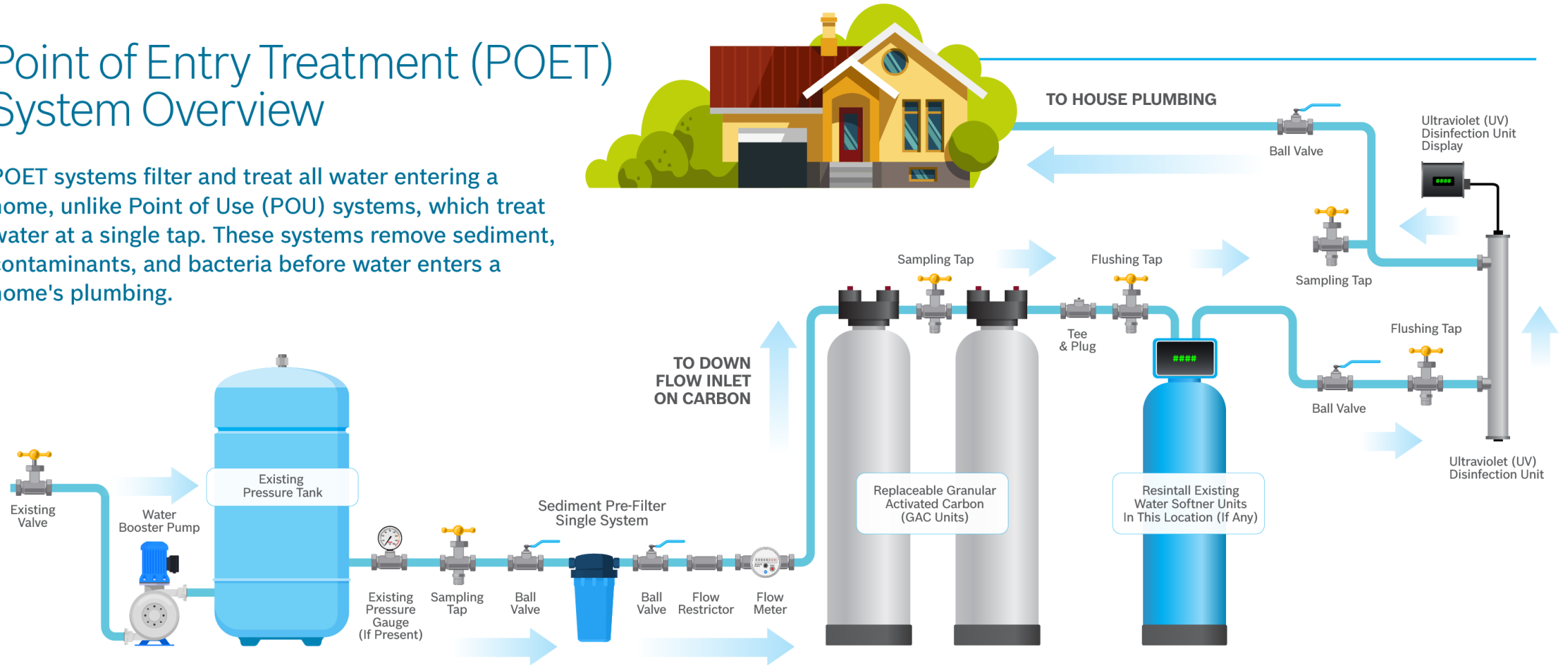
(as of 3/10/25)



Point of Entry Treatment (POET) Systems

Point of Entry Treatment (POET) System Overview

POET systems filter and treat all water entering a home, unlike Point of Use (POU) systems, which treat water at a single tap. These systems remove sediment, contaminants, and bacteria before water enters a home's plumbing.



AIR EVALUATION

- Indoor Air Assessment



SOIL EVALUATION

- Geo-probing
- Excavation/Soil Removal
- Passive Soil-Gas Assessment
- Visual Assessment/ Odor Investigations

SUB-SURFACE GEOPHYSICAL INVESTIGATION

- Ground Penetrating Radar (GPR)
- Downhole Geophysics
- Electrical Resistivity Interpretation (ERI)

WATER SAMPLING

- Water Sampling
- Well Headspace Screening
- POET Installation
- Visual Assessment/ Odor Investigations

GROUNDWATER EVALUATION

- Well Gauging
- Product Recovery
- Packer Test
- Recovery Well Installation
- Monitoring Well Installation

Packer Testing

- Week of March 10

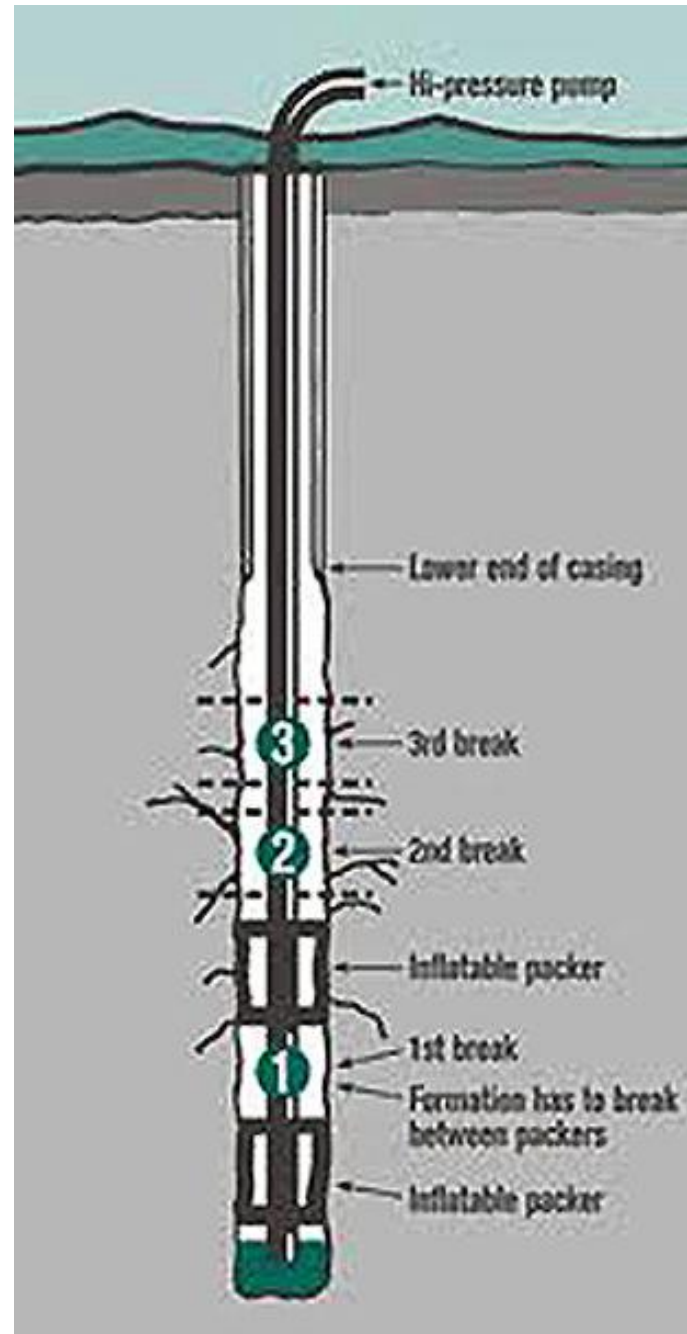


Image source: EnviroProbe.com

Recovery Well Drilling

- Week of March 17

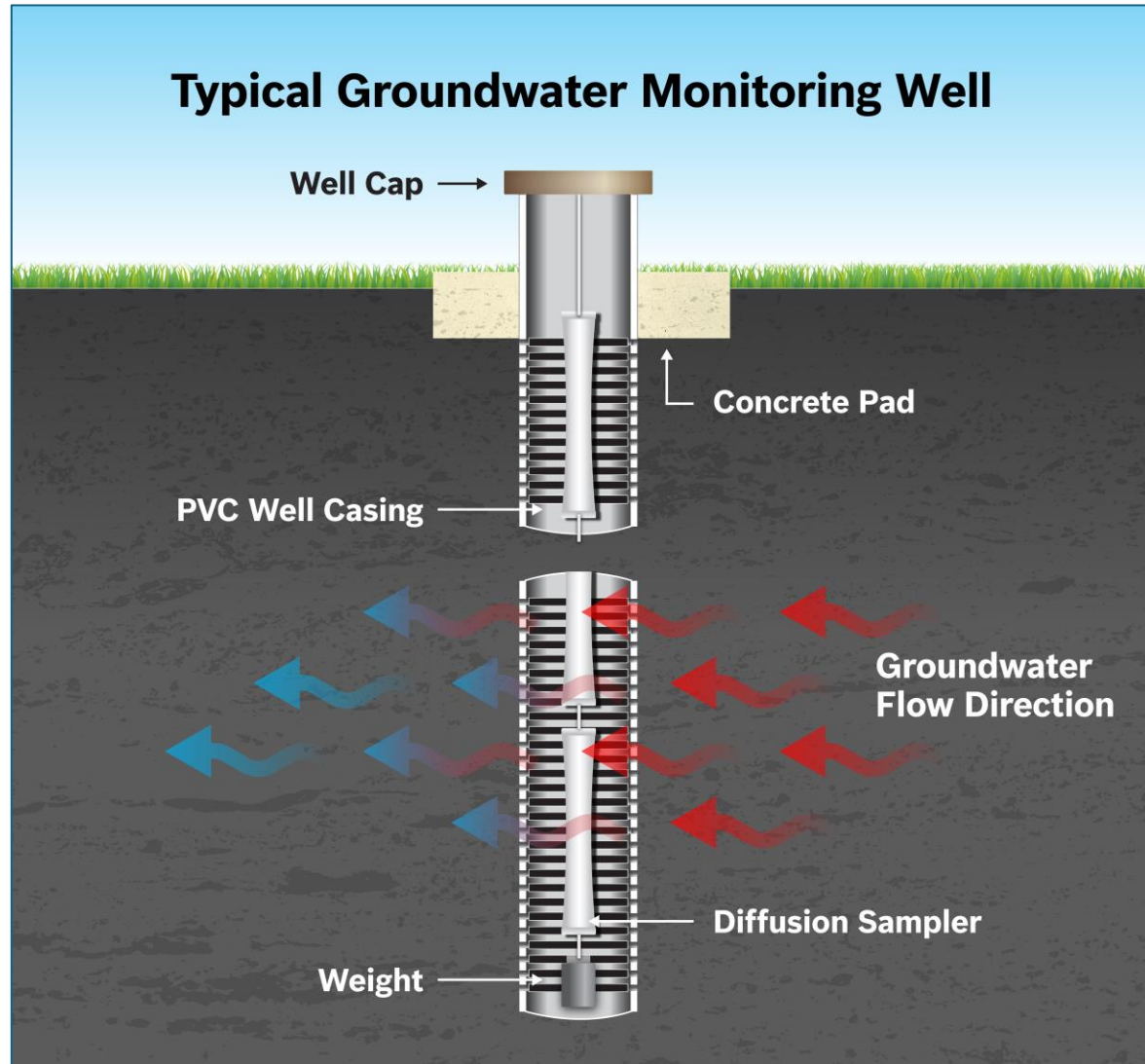


Recovery Well



Image source: www.epa.gov

Monitoring Wells



Operational Updates

In-Line Inspection Tool Runs

- Two ILI tool runs scheduled to be completed this month



Residential & Community Support

Residential & Community Support

- Community Support Center at our Bucks Pump Station
 - 1798 Dolington Road, Yardley, PA 19067
- Bottled water pickups, general information and requests



Next Steps

Next Steps

- Continued water testing
- Installation of POET Systems
- Continued site characterization and near-term remediation
- Subsequent remediation through PA DEP Act 2 requirements
- Operations and pipeline integrity work
- Personalized meetings
- Tele-Town Hall March 27

FOR MORE INFORMATION CALL
1-877-397-3383
OR VISIT
uppermakefield.incidentupdates.com

